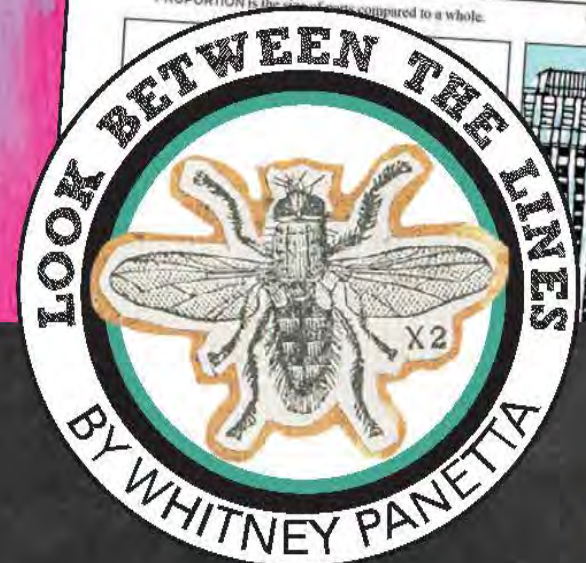


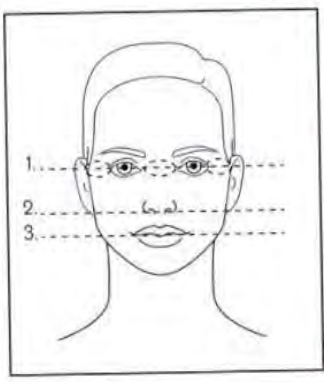
# ART ACTIVITY

## PROPORTION AND SCALE ACTIVITY



### PROPORTION & SCALE

PROPORTION is the size of parts compared to a whole. For example, FACIAL PROPORTION: eyes generally fall in the center of the face and there is an eye width between the eyes. The nose falls halfway between the eyes and the chin. The mouth falls halfway between the nose and the chin.



SCALE is the size of an object compared to another object. For example: Based on the size of a human, you can roughly tell the size of the tree, which gives you information about the size of the building.

SCALE can be realistic or unrealistic:

**STANDARD PROPORTION:** is realistic proportion, such as the facial proportion example above. With standard or realistic proportion the proportion appears to be correct in comparison to other parts.

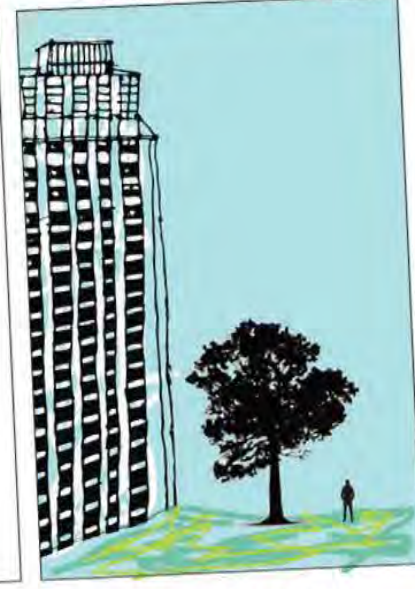
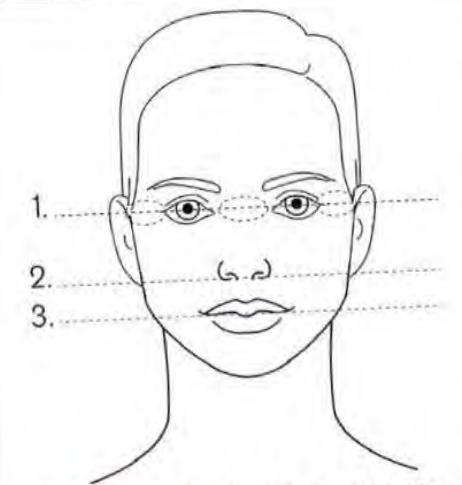
**ALTERED PROPORTION:** is unrealistic proportion and can be changed.

PRINCIPLES OF DESIGN

### PROPORTION & SCALE

PROPORTION is the size of parts compared to a whole.

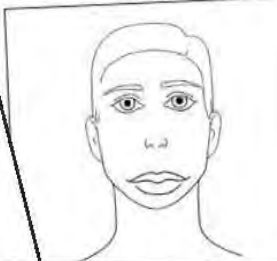
SCALE is the size of an object compared to another object.



**STANDARD PROPORTION:** objects look realistic.

**REALISTIC FACIAL PROPORTION:**

1. The eyes generally fall in the center of the face and there is an eye width between the eyes.
2. The nose falls halfway between the eyes and the chin.
3. The mouth falls halfway between the nose and the chin.



### PROPORTION & SCALE

Draw a picture that shows either ALTERED or REALISTIC PROPORTION.

Draw a picture that shows **ALTERED PROPORTION.**

Draw a picture that shows **REALISTIC PROPORTION.**

Fill in the facial features using **ALTERED PROPORTION.**

Fill in the facial features using **REALISTIC PROPORTION.**

INTRODUCE OR REVIEW THE PRINCIPLE, PROPORTION & SCALE  
**INFO ON THE FRONT, 2 ACTIVITY OPTIONS ON THE BACK**



# PRINCIPLES OF DESIGN



This art activity is geared towards elementary age students but can be used for lower middle school.



**Use as an introduction or review of the principles of design, early finisher, or sub plan activity.**



Information on the front, 2 activity options for the back.



**Printable handout, printable poster, color and colour spelling options.**



# WHAT YOU GET

## Lesson pack includes:

- ✓ Proportion/Scale Handout (3 pages)
  - Information on the front
  - 2 Activity options on the back
- ✓ Printable Poster (1 page)



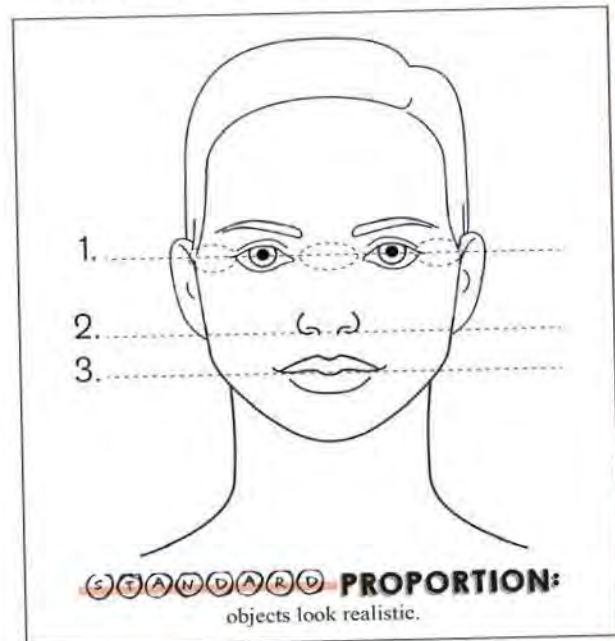
# PRINTABLE POSTER:

- Display in your classroom
- Print as a reference for each table.
- Share with students digitally.
- Print professionally or at school.

# PROPORTION & SCALE

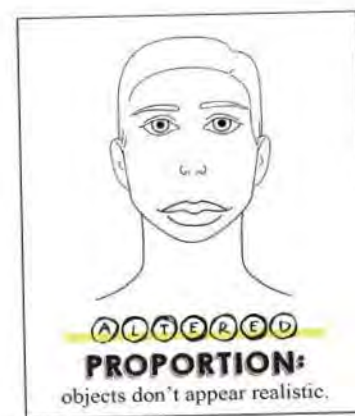
PROPORTION is the size of parts compared to a whole.

SCALE is the size of an object compared to another object.



## REALISTIC FACIAL PROPORTION:

1. The eyes generally fall in the center of the face and there is an eye width between the eyes.
2. The nose falls halfway between the eyes and the chin.
3. The mouth falls halfway between the nose and the chin.

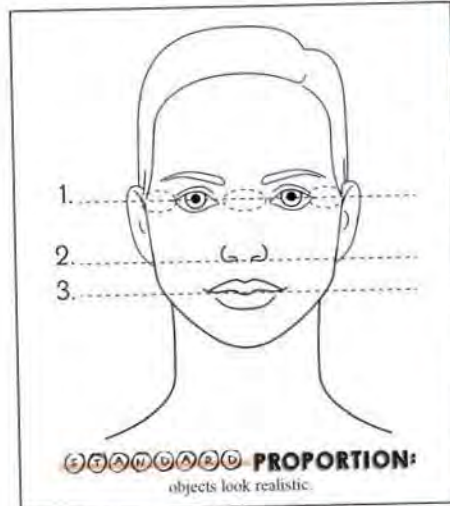




# PROPORTION & SCALE

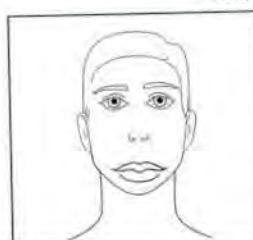
PROPORTION is the size of parts compared to a whole.

SCALE is the size of an object compared to another object.



## REALISTIC FACIAL PROPORTION:

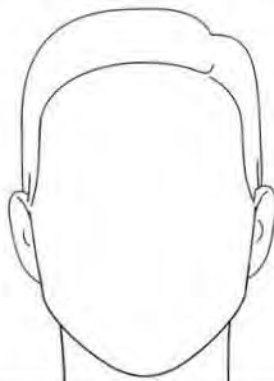
1. The eyes generally fall in the center of the face and there is an eye width between the eyes.
2. The nose falls halfway between the eyes and the chin.
3. The mouth falls halfway between the nose and the chin.



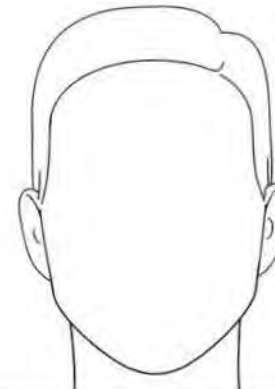
Draw a picture that shows  
**MINIATURE PROPORTION.**

Draw a picture that shows  
**MONUMENTAL PROPORTION.**

Fill in the facial features using  
**STANDARD PROPORTION.**



Fill in the facial features using  
**ALTERED PROPORTION.**



Name: \_\_\_\_\_

# PROPORTION & SCALE

Draw a picture that shows either **ALTERED** or **REALISTIC PROPORTION.**

# ACTIVITY:

YOUNGER STUDENTS, 2 ACTIVITY OPTIONS FOR THE BACK  
COLOR AND COLOUR SPELLING 3 PAGES

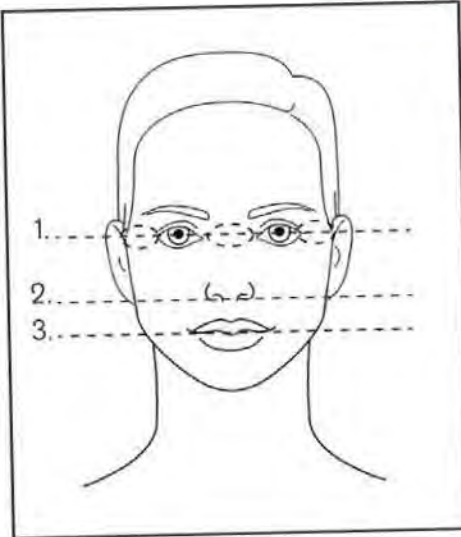


# PROPORTION &



PROPORTION is the size of parts compared to a whole. For example, FACIAL PROPORTION:

1. The eyes generally fall in the center of the face and there is an eye width between the eyes.
2. The nose falls halfway between the eyes and the chin.
3. The mouth falls halfway between the nose and the chin.

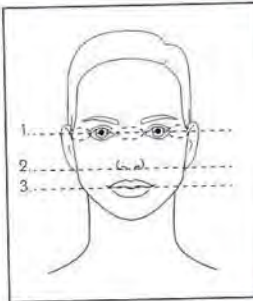


**SCALE** can be realistic or unre

# PROPORTION & SCALE

PROPORTION is the size of parts compared to a whole. For example, FACIAL PROPORTION:

1. The eyes generally fall in the center of the face and there is an eye width between the eyes.
2. The nose falls halfway between the eyes and the chin.
3. The mouth falls halfway between the nose and the chin.

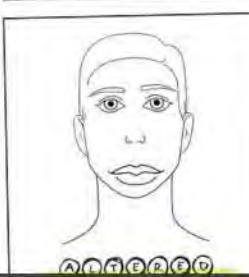


SCALE is the size of an object compared to another object. For example: Based on the size of a human, you can roughly tell the size of the tree, which gives you information about the size of the building.

**SCALE** can be realistic or unrealistic:

**STANDARD PROPORTION:** is realistic proportion, such as the facial proportion example above. With standard or realistic proportion the proportion appears to be correct in comparison to other parts.

**ALTERED PROPORTION:** is unrealistic proportion, such as the examples below. With altered or unrealistic proportion objects appear to be changed in comparison to other parts.



Draw a picture that shows **MINIATURE PROPORTION.**

Draw a picture that shows **MONUMENTAL PROPORTION.**

Fill in the facial features using **STANDARD PROPORTION.**

Fill in the facial features using **ALTERED PROPORTION.**

# ACTIVITY:

OLDER STUDENTS, 1 ACTIVITY ON THE BACK  
 COLOR AND COLOUR SPELLING **2 PAGES**



# TEACHERS LOVE THESE ART PRODUCTS:



"Used this resource with my Grade 3s as they LOVE art. Worksheets are fantastic and easy to follow. My students really enjoyed it!"



"This was super engaging for my kids! It was an independent work that they would complete in small groups. They had a blast!"



# CHECK OUT MORE PRODUCTS:

**ART PROJECT**  
ARTIST TRADING CARDS

LOOK BETWEEN THE LINES  
BY WHITNEY PARNELL

ARTIST TRADING CARDS:  
LESSON PLAN, HANDOUTS, CHECKLIST,  
CRITIQUE, PRESENTATION

**GRAB & GO**  
24 ELEMENTARY ART LESSONS

LOOK BETWEEN THE LINES  
BY WHITNEY PARNELL

4 PROJECTS PER GRADE IN  
KINDERGARTEN TO 5TH

**ART ELEMENTARY**  
14 PROJECTS  
2 CLAY UNITS

LOOK BETWEEN THE LINES  
BY WHITNEY PARNELL

14 PROJECTS  
COIL, PINCH POT, SLAB, SCULPTING, MORE  
EVERYTHING FOR 2 K-5TH CLAY UNITS

**ELEMENTARY ART**  
Autumn Leaf Painting

Lesson plan, presentations  
worksheet, & rubric

LOOK BETWEEN THE LINES  
BY WHITNEY PARNELL

Positive & Negative Space, Overlapping, & Color

**ART ELEMENTARY**  
MARKER MONOPRINT PROJECT

LOOK BETWEEN THE LINES  
BY WHITNEY PARNELL

PRINTMAKING PROJECT:  
GARDEN MARKER PRINT  
FOR ELEMENTARY OR MIDDLE SCHOOL

**ACTIVITY PRINCIPLES OF DESIGN**  
10 WORKSHEETS  
PRINCIPLES OF DESIGN

LOOK BETWEEN THE LINES  
BY WHITNEY PARNELL

FRONT & BACK WORKSHEETS  
WITH ACTIVITIES & DIGITAL  
FILL IN OPTIONS

Check out more projects for elementary through high school students.

Grab early finishers for those quick artists or an entire curriculum so you can focus on teaching.

[VIEW MORE HERE](#)



# LOOK BETWEEN THE LINES

## BY WHITNEY PANETTA



I'm Whitney, a former art teacher turned art curriculum developer. I now focus on designing art lessons, resources, & full curriculums for elementary, middle, high school art teachers, homeschool parents, & general art enthusiasts.

I am so glad to still be connected to the world of art education and I love seeing my resources "in the wild" all over the globe. Reach out anytime with questions or comments at [whitneywpanetta@gmail.com](mailto:whitneywpanetta@gmail.com).