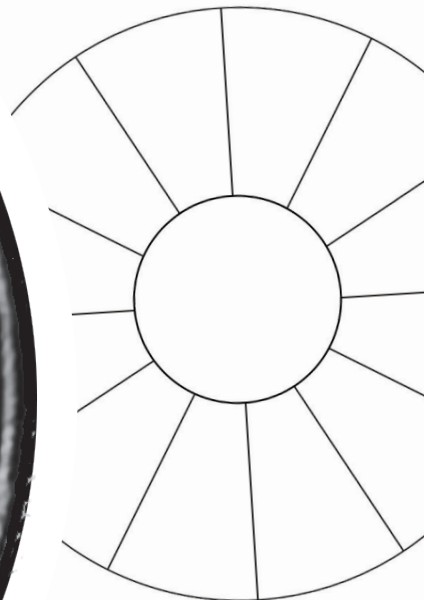


INTRO TO ART ACTIVITIES

COLOR THEORY WORKSHEETS

The Color Wheel

1. Paint and label the three primary colors (HINT: there should be three spaces between each primary color)
2. Mix, paint, and label your secondary colors (HINT: there should be a space between your primary and secondary colors)
3. Mix, paint, and label the tertiary colors



Color Schemes

Warm Colors

--	--	--

Complementary Color Scheme

--	--

Analogous Color Scheme

--	--	--

Triadic Color Scheme

--	--	--

1. Research the following color schemes, figure out which color combinations fit the scheme.
2. Fill in the shapes with colors that correspond to the color scheme.
3. Make sure you are only using primary colors to mix the colors!
4. Use your color wheel as a guide!

Cool Colors

--	--	--

Split Complementary Color Scheme

--	--	--

Square Color Scheme

--	--	--	--

Color Scheme

Warm Colours

--	--	--

Complementary Colour Scheme

--	--

1. Research the following colour schemes, figure out which colour combinations fit the scheme.
2. Fill in the shapes with colours that correspond to the colour scheme.
3. Make sure you are only using primary colours to mix the colours.
4. Use your colour wheel as a guide.

Cool Colours

--	--	--

Split

Grayscale

1. Paint the first square black.
2. Paint the last square white.
3. Mix 50% black and 50% white to create gray, paint the center square.
4. Add a little black to part of the gray to create an even step between the black square and gray square. Fill in the square. Do the same in the final square, but create a lighter gray by adding white.

--	--	--	--	--	--

Mixing Neutrals

1. Paint the top two circles in each group with complementary colors (ex: one circle blue, one circle orange).
2. Mix the complementary colors, 50% of each color, to create a neutral color. Fill in the lower circle of each group with the neutral color.
3. Paint the three groups using a different complementary color set per group.

The Colour Wheel

1. Colour and label the three primary colors. (HINT: there should be three spaces between each primary colour)
2. Colour and label your secondary colours. (HINT: there should be a space between your primary, secondary colours)
3. Colour and label the tertiary colours. (HINT: the primary colour name should come before the secondary colour)
4. Label one example of complementary colours.
5. Label one example of analogous colours.

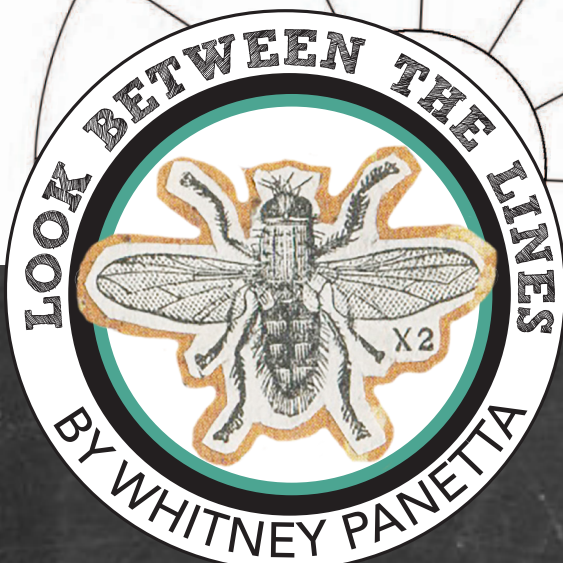
Greyscale

1. Paint the first square black.
2. Paint the last square white.
3. Mix 50% black and 50% white to create grey, paint the center square.
4. Add a little black to part of the grey to create an even step between the black square and grey square. Fill in the square. Do the same in the final square, but create a lighter grey by adding white.

--	--	--	--	--	--

Mixing Neutrals

PRINTABLE WORKSHEETS
COLOR & COLOUR



The Color Wheel

1. Paint and label the three primary colors (HINT: there should be three spaces between each primary color)
2. Mix, paint, and label your secondary colors (HINT: there should be a space between your primary and secondary colors)
3. Mix, paint, and label the tertiary colors



Grayscale

1. Paint the first square black.
2. Paint the last square white.
3. Mix 50% black and 50% white to create gray, paint the center square.
4. Add a little black to part of the gray to create an even step between the black square and gray square. Fill in the square. Do the same in the final square, but create a lighter gray by adding white.

--	--	--	--	--

Color Schemes

Warm Colors

--	--	--

Complementary Color Scheme

--	--

1. Research the following color schemes, figure out which color combinations fit the scheme.
2. Fill in the shapes with colors that correspond to the color scheme.
3. Make sure you are only using primary colors to mix the colors!
4. Use your color wheel as a guide!

Cool Colors

--	--	--

Split

Mixing Neutrals

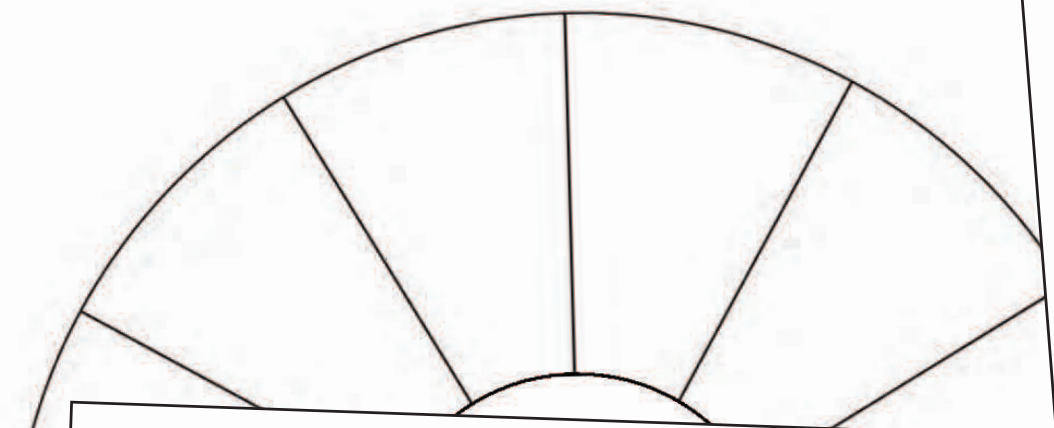
1. Paint the top two circles in each group with complementary colors (ex: one circle blue, one circle orange)
2. Mix the complementary colors, 50% of each color, to create a neutral color. Fill in the lower circle of each group with the neutral color.
3. Paint the three groups using a different complementary color set per group.

<div><div></div><div></div><div></div></div>	<div><div></div><div></div><div></div></div>	<div><div></div><div></div><div></div></div>
--	--	--

COLOR SPELLING

The Colour Wheel

1. Colour and label the three primary colors. (HINT: there should be three spaces between each primary colour)
2. Colour and label your secondary colours. (HINT: there should be a space between your primary, secondary colours)
3. Colour and label the tertiary colours. (HINT: the primary colour name should come before the secondary colour)
4. Label one example of complementary colours.
5. Label one example of analogous colours.



Greyscale

1. Paint the first square black.
2. Paint the last square white.
3. Mix 50% black and 50% white to create grey, paint the center square.
4. Add a little black to part of the grey to create an even step between the black square and grey square. Fill in the square. Do the same in the final square, but create a lighter grey by adding white.

--	--	--	--	--

Mixing Neutrals

Colour Schemes

1. Research the following colour schemes, figure out which colour combinations fit the scheme.
2. Fill in the shapes with colours that correspond to the colour scheme.
3. Make sure you are only using primary colours to mix the colours.
4. Use your colour wheel as a guide.

Warm Colours

--	--	--

Complementary Colour Scheme

--	--

Analogous Colour Scheme

--	--	--

Triadic Colour Scheme

--	--	--

Cool Colours

--	--	--

Split Complementary Colour Scheme

--	--	--

Square Colour Scheme

--	--	--

COLOUR SPELLING